

Grizzly *Industrial, Inc.*®

MODEL G0489 METALWORKING SANDER OWNER'S MANUAL



COPYRIGHT © FEBRUARY, 2006 BY GRIZZLY INDUSTRIAL, INC.
**WARNING: NO PORTION OF THIS MANUAL MAY BE REPRODUCED IN ANY SHAPE
OR FORM WITHOUT THE WRITTEN APPROVAL OF GRIZZLY INDUSTRIAL, INC.**

#PC7920 PRINTED IN CHINA

 **WARNING!**

This manual provides critical safety instructions on the proper setup, operation, maintenance and service of this machine/equipment.

Failure to read, understand and follow the instructions given in this manual may result in serious personal injury, including amputation, electrocution or death.

The owner of this machine/equipment is solely responsible for its safe use. This responsibility includes but is not limited to proper installation in a safe environment, personnel training and usage authorization, proper inspection and maintenance, manual availability and comprehension, application of safety devices, blade/cutter integrity, and the usage of personal protective equipment.

The manufacturer will not be held liable for injury or property damage from negligence, improper training, machine modifications or misuse.

 **WARNING!**

Some dust created by power sanding, sawing, grinding, drilling, and other construction activities contains chemicals known to the State of California to cause cancer, birth defects or other reproductive harm. Some examples of these chemicals are:

- **Lead from lead-based paints.**
- **Crystalline silica from bricks, cement and other masonry products.**
- **Arsenic and chromium from chemically-treated lumber.**

Your risk from these exposures varies, depending on how often you do this type of work. To reduce your exposure to these chemicals: Work in a well ventilated area, and work with approved safety equipment, such as those dust masks that are specially designed to filter out microscopic particles.

Table of Contents

INTRODUCTION	2
Foreword	2
Contact Info.....	2
Machine Data Sheet.....	3
Identification	4
SECTION 1: SAFETY	5
Safety Instructions for Machinery.....	5
Safety for Belt Sanders	7
SECTION 2: CIRCUIT REQUIREMENTS	8
220 3-Phase.....	8
Grounding.....	9
Phase Converter	9
Extension Cords.....	9
SECTION 3: SET UP	10
Set Up Safety	10
Items Needed for Set Up	10
Unpacking	10
Inventory.....	11
Clean Up	12
Site Considerations	12
Mounting to Shop Floor.....	13
Mounting Sander.....	14
Spark Trap, Rest & Eye Shield	14
Dust Collection	15
Test Run.....	15
SECTION 4: OPERATIONS	16
Operation Safety	16
Angle Adjustment	16
Rests	16
Grinding Tips.....	17
SECTION 5: MAINTENANCE	18
Schedule	18
Accessories.....	18
Changing the Belt.....	18
Electrical Components & Wiring Diagram.....	19
G0489 Parts Breakdown	20
G0489 Parts List	21
WARRANTY AND RETURNS	22

INTRODUCTION

Foreword

We are proud to offer the Model G0489 Metalworking Sander. This machine is part of a growing Grizzly family of fine metalworking machinery. When used according to the guidelines set forth in this manual, you can expect years of trouble-free, enjoyable operation and proof of Grizzly's commitment to customer satisfaction.

We are pleased to provide this manual with the Model G0489. It was written to guide you through assembly, review safety considerations, and cover general operating procedures. It represents our effort to produce the best documentation possible.

The specifications, drawings, and photographs illustrated in this manual represent the Model G0489 as supplied when the manual was prepared. However, owing to Grizzly's policy of continuous improvement, changes may be made at any time with no obligation on the part of Grizzly. For your convenience, we always keep current Grizzly manuals available on our website at **www.grizzly.com**. Any updates to your machine will be reflected in these manuals as soon as they are complete. Visit our site often to check for the latest updates to this manual!

Contact Info

If you have any comments regarding this manual, please write to us at the address below:

Grizzly Industrial, Inc.
c/o Technical Documentation Manager
P.O. Box 2069
Bellingham, WA 98227-2069

We stand behind our machines. If you have any service questions or parts requests, please call or write us at the location listed below.

Grizzly Industrial, Inc.
1203 Lycoming Mall Circle
Muncy, PA 17756
Phone: (570) 546-9663
Fax: (800) 438-5901
E-Mail: techsupport@grizzly.com
Web Site: <http://www.grizzly.com>





MACHINE DATA SHEET

Customer Service #: (570) 546-9663 • To Order Call: (800) 523-4777 • Fax #: (800) 438-5901

GRIZZLY MODEL G0489 METALWORKING SANDER

Design Type Floor Model

Product Dimensions:

Height 48"
Width 22½"
Length 39"
Weight 188 lbs.
Footprint 13¾" x 20¾"

Shipping Dimensions:

Height 21"
Width 30"
Length 46"
Weight (Approx) 210 lbs.

Electrical:

Switch Magnetic with Thermal Overload Protection
Switch Voltage 220V
Cord Length 6'
Recommended Breaker Size 15 Amp
Plug Not Included

Motor:

Type TEFC
Horsepower 4 HP
Phase / Voltage 3-Phase / 220V
Amperage 11
Cycle and RPM 60 Hertz / 1725 RPM
Switch Push Button with Safety Cover
Power Transfer Direct Drive
Bearings Sealed, Permanently Lubricated

Main Specifications:

Belt Size 3" x 79"
Platen Material Graphite
Platen Length 20½"
Contact Wheel Diameter 8"
Contact Wheel Surface Rubber
Belt Release Spring Loaded Quick Release
Sanding Belt Speed 3937 Sfpm
Sanding Belt Tilt 30°
Belt Height in Horizontal Position 40"
Main Construction Formed Steel
Drive Wheel Construction Cast Aluminum

Features:

..... 4" Dust Port
..... Single Knob Tracking Adjustment

Specifications, while deemed accurate, are not guaranteed.



Identification

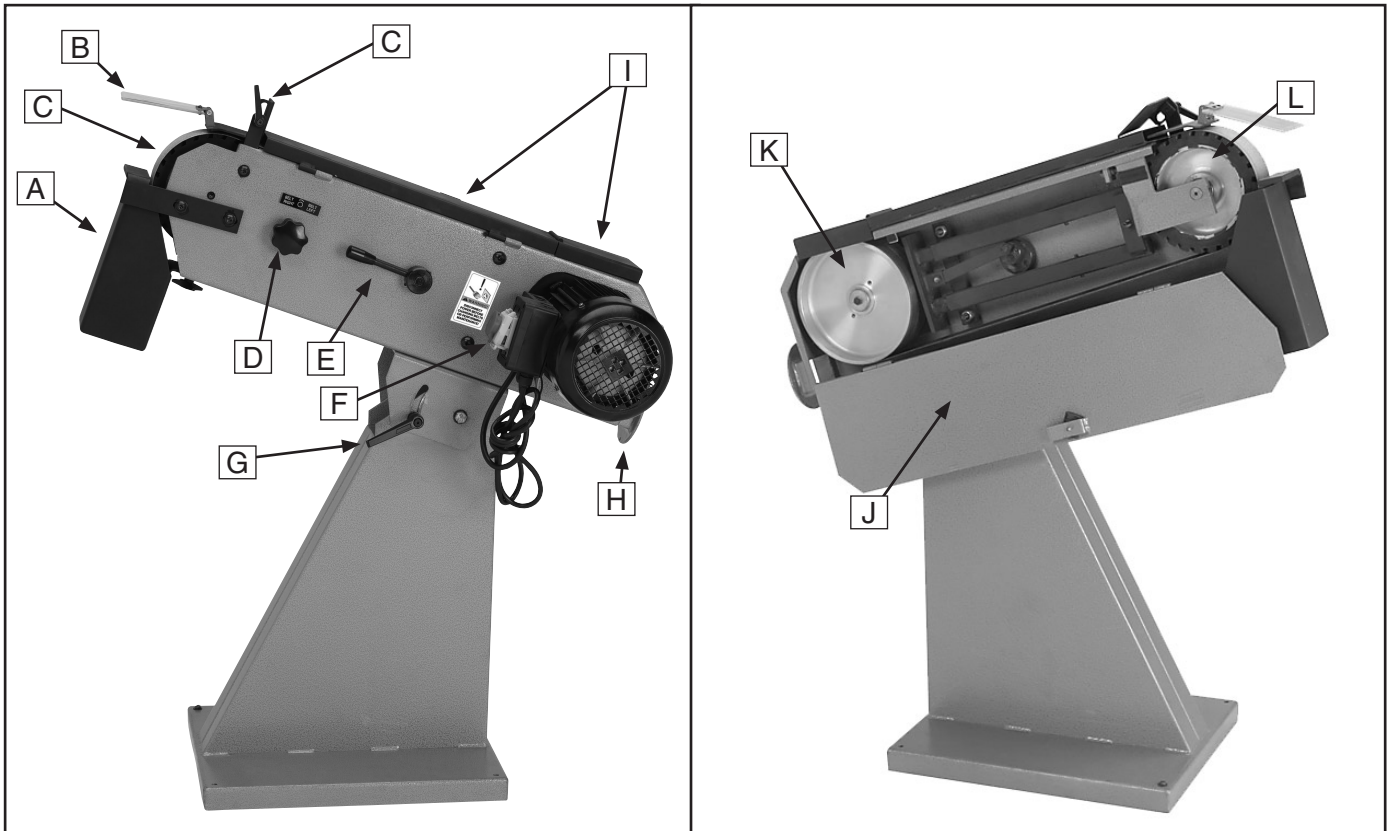


Figure 1. Machine Identification.

- | | |
|---|------------------------------------|
| A. Spark Trap | G. Angle Adjustment Lever |
| B. Eye Shield | H. Dust Port |
| C. Tool/Work Rests | I. Belt Guards Long & Short |
| D. Belt Tracking Adjustment Knob | J. Cover Door |
| E. Belt Tension Release Lever | K. Drive Wheel |
| F. ON/OFF Switch | L. Contact Wheel |



SECTION 1: SAFETY


WARNING

For Your Own Safety, Read Instruction Manual Before Operating this Machine

The purpose of safety symbols is to attract your attention to possible hazardous conditions. This manual uses a series of symbols and signal words which are intended to convey the level of importance of the safety messages. The progression of symbols is described below. Remember that safety messages by themselves do not eliminate danger and are not a substitute for proper accident prevention measures.

 **DANGER** Indicates an imminently hazardous situation which, if not avoided, **WILL** result in death or serious injury.

 **WARNING** Indicates a potentially hazardous situation which, if not avoided, **COULD** result in death or serious injury.

 **CAUTION** Indicates a potentially hazardous situation which, if not avoided, **MAY** result in minor or moderate injury. It may also be used to alert against unsafe practices.

NOTICE This symbol is used to alert the user to useful information about proper operation of the machine.

WARNING

Safety Instructions for Machinery

- 1. READ THROUGH THE ENTIRE MANUAL BEFORE STARTING MACHINERY.** Machinery presents serious injury hazards to untrained users.
- 2. ALWAYS USE ANSI APPROVED SAFETY GLASSES WHEN OPERATING MACHINERY.** Everyday eyeglasses only have impact resistant lenses—they are NOT safety glasses.
- 3. ALWAYS WEAR AN NIOSH APPROVED RESPIRATOR WHEN OPERATING MACHINERY THAT PRODUCES DUST.** Wood dust is a carcinogen and can cause cancer and severe respiratory illnesses.
- 4. ALWAYS USE HEARING PROTECTION WHEN OPERATING MACHINERY.** Machinery noise can cause permanent hearing damage.
- 5. WEAR PROPER APPAREL. DO NOT** wear loose clothing, gloves, neckties, rings, or jewelry which may get caught in moving parts. Wear protective hair covering to contain long hair and wear non-slip footwear.
- 6. NEVER OPERATE MACHINERY WHEN TIRED, OR UNDER THE INFLUENCE OF DRUGS OR ALCOHOL.** Be mentally alert at all times when running machinery.



WARNING

Safety Instructions for Machinery

7. **ONLY ALLOW TRAINED AND PROPERLY SUPERVISED PERSONNEL TO OPERATE MACHINERY.** Make sure operation instructions are safe and clearly understood.
8. **KEEP CHILDREN AND VISITORS AWAY.** Keep all children and visitors a safe distance from the work area.
9. **MAKE WORKSHOP CHILD PROOF.** Use padlocks, master switches, and remove start switch keys.
10. **NEVER LEAVE WHEN MACHINE IS RUNNING.** Turn power **OFF** and allow all moving parts to come to a complete stop before leaving machine unattended.
11. **DO NOT USE IN DANGEROUS ENVIRONMENTS.** DO NOT use machinery in damp, wet locations, or where any flammable or noxious fumes may exist.
12. **KEEP WORK AREA CLEAN AND WELL LIT.** Clutter and dark shadows may cause accidents.
13. **USE A GROUNDED EXTENSION CORD RATED FOR THE MACHINE AMPERAGE.** Undersized cords overheat and lose power. Replace extension cords if they become damaged. DO NOT use extension cords for 220V machinery.
14. **ALWAYS DISCONNECT FROM POWER SOURCE BEFORE SERVICING MACHINERY.** Make sure switch is in OFF position before reconnecting.
15. **MAINTAIN MACHINERY WITH CARE.** Keep blades sharp and clean for best and safest performance. Follow instructions for lubricating and changing accessories.
16. **MAKE SURE GUARDS ARE IN PLACE AND WORK CORRECTLY BEFORE USING MACHINERY.**
17. **REMOVE ADJUSTING KEYS AND WRENCHES.** Make a habit of checking for keys and adjusting wrenches before turning machinery **ON**.
18. **CHECK FOR DAMAGED PARTS BEFORE USING MACHINERY.** Check for binding and alignment of parts, broken parts, part mounting, loose bolts, and any other conditions that may affect machine operation. Repair or replace damaged parts.
19. **USE RECOMMENDED ACCESSORIES.** Refer to the instruction manual for recommended accessories. The use of improper accessories may cause risk of injury.
20. **DO NOT FORCE MACHINERY.** Work at the speed for which the machine or accessory was designed.
21. **SECURE WORKPIECE.** Use clamps or a vise to hold the workpiece when practical. A secured workpiece protects your hands and frees both hands to operate the machine.
22. **DO NOT OVERREACH.** Keep proper footing and balance at all times.
23. **MANY MACHINES WILL EJECT THE WORKPIECE TOWARD THE OPERATOR.** Know and avoid conditions that cause the workpiece to "kickback."
24. **ALWAYS LOCK MOBILE BASES (IF USED) BEFORE OPERATING MACHINERY.**
25. **BE AWARE THAT CERTAIN DUST MAY BE HAZARDOUS** to the respiratory systems of people and animals, especially fine dust. Make sure you know the hazards associated with the type of dust you will be exposed to and always wear a respirator approved for that type of dust.



WARNING

Additional Safety for Belt Sanders

- 1. RESPIRATOR AND SAFETY GLASSES.** Always wear a respirator and safety glasses while operating the machine. Dust and chips are created when sanding. Some debris will be ejected, becoming hazards to the eyes and lungs.
- 2. PROTECT YOUR HEARING.** Always wear approved hearing safety equipment when operating this belt sander.
- 3. DUST COLLECTION SYSTEM.** Never operate the sander without an adequate dust collection system in place and running. Use only a system rated for metal dust collection.
- 4. CLOTHING.** DO NOT wear loose clothing while operating this machine. Roll up or button sleeves at the cuff.
- 5. HAND PROTECTION.** DO NOT place hands near, or in contact with, sanding belt during operation!
- 6. HOT WORKPIECES.** Friction will cause the workpiece to heat to the point of causing burns to the skin.
- 7. FLAMMABLE MATERIALS.** Sanding metal will cause sparks. Make sure there are no flammable or combustible materials near sander.
- 8. FEEDING STOCK.** Firmly grasp the workpiece in both hands and ease it into the machine using light pressure. DO NOT jam the workpiece into the machine during operation. Feed the workpiece against the direction of rotation. DO NOT sand tapered or pointed stock with the point facing the feed direction. Never sand more than one piece of stock at a time.
- 9. BELT GUARDS.** Use belt guards when the section of belt is not being used to avoid unintended contact with the belt. Always keep door closed during operation.
- 10. REPLACING SANDPAPER.** Replace sanding paper when it becomes worn. DO NOT operate the sander with a damaged or badly worn sandpaper.
- 11. MAINTENANCE AND ADJUSTMENTS.** Perform machine inspections and maintenance service promptly when called for. Disconnect power before performing maintenance or adjustments on the sander.
- 12. EXPERIENCING DIFFICULTIES.** Any problem, with the exception of conveyor belt tracking that is concerned with any moving parts or accessories, must be investigated and corrected with the power disconnected, and after all moving parts have come to a complete stop.

WARNING

Like all machines, there is danger associated with the Model G0489. Accidents are frequently caused by lack of familiarity or failure to pay attention. Use this machine with respect and caution to lessen the possibility of operator injury. If normal safety precautions are overlooked or ignored, serious personal injury may occur.

CAUTION

No list of safety guidelines can be complete. Every shop environment is different. Always consider safety first, as it applies to your individual working conditions. Use this and other machinery with caution and respect. Failure to do so could result in serious personal injury, damage to equipment, or poor work results.



SECTION 2: CIRCUIT REQUIREMENTS

220 3-Phase

⚠️ WARNING

Serious personal injury could occur if you connect your machine to the power source before you have completed the set up process. **DO NOT** connect the machine to the power source until instructed to do so.

Amperage Draw

The Model G0489 features a 220V motor that draws the following amps under maximum load:

Motor Draw at 220V 11 Amps

Circuit Requirements

We recommend connecting this machine to a dedicated circuit with a verified ground, using the circuit breaker size given below. Never replace a circuit breaker with one of higher amperage without consulting a qualified electrician to ensure compliance with wiring codes. **If you are unsure about the wiring codes in your area or you plan to connect your machine to a shared circuit, you may create a fire hazard—consult a qualified electrician to reduce this risk.**

220V Circuit Breaker 15 Amps

Connection Type

Recommended connection type (see **Figures 2 & 3** for an example):

220V Locking Shut-Off Switch

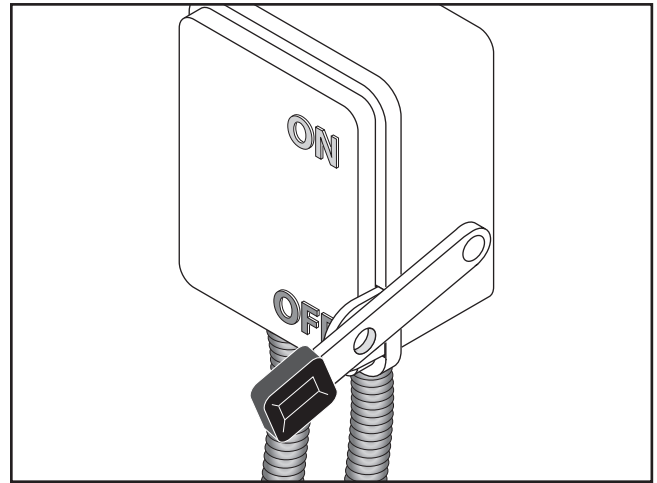


Figure 2. A locking shut-off switch near the machine.

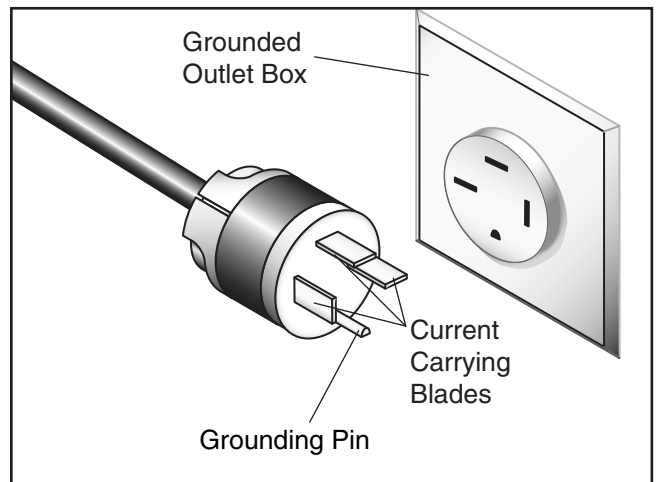


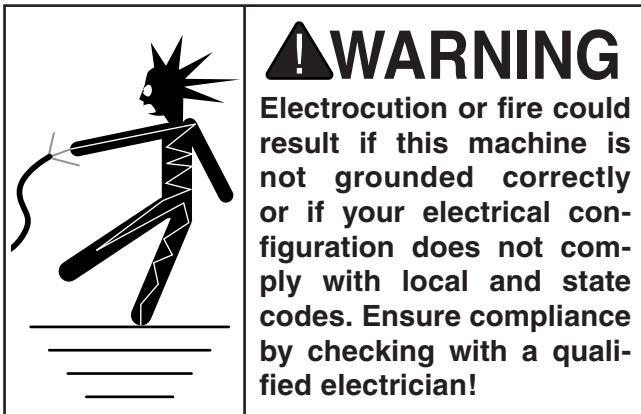
Figure 3. 15-15R plug and receptacle.



Grounding

In the event of an electrical short, grounding reduces the risk of electric shock. The grounding wire in the power cord must be properly connected to the grounding prong on the plug; likewise, the outlet must be properly installed and grounded. All electrical connections must be made in accordance with local codes and ordinances.

Improper connections of the electrical-grounding conductor increases the risk of electric shock. Check with a qualified electrician or one of our service personnel if you do not understand the grounding instructions, or if you doubt the machine is properly grounded.



Phase Converter

When using a phase converter, the power from the manufactured power leg (sometimes called the wild wire) can fluctuate. Connect the manufactured power leg to the S terminal to prevent damage to the transformer. The wire from the S terminal can handle some fluctuation because it goes directly to the motor. The power going to the R and T terminals goes to the transformer and must be consistent to prevent damage.

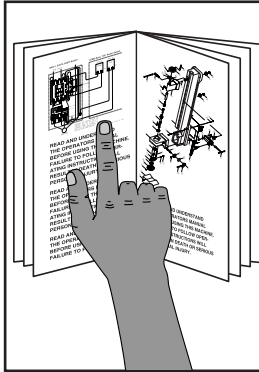
Extension Cords

Because of the high amperage draw from this machine, we do not recommend the use of extension cords. Instead, position your equipment near installed wiring to eliminate the need for extension cords.

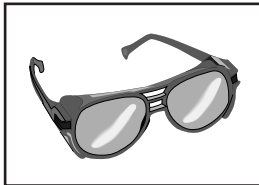


SECTION 3: SET UP

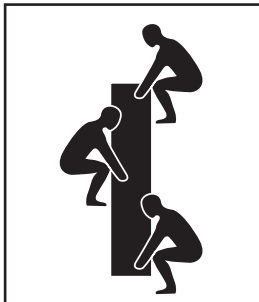
Set Up Safety



!WARNING
This machine presents serious injury hazards to untrained users. Read through this entire manual to become familiar with the controls and operations before starting the machine!



!WARNING
Wear safety glasses during the entire set up process!



!WARNING
The Model G0489 is a heavy machine. DO NOT over-exert yourself while unpacking or moving your machine—get assistance.

Items Needed for Set Up

The following items are needed to complete the set up process, but are not included with your machine:

Description	Qty
• Safety Glasses (for each person)	1
• Dust Collection System	1
• Cleaning Solvent	1
• Shop Towels.....	1
• Floor Mounting Hardware.....	1
• Wrench or Socket 19mm.....	1
• Assistants	2

Unpacking

The Model G0489 was carefully packed when it left our warehouse. If you discover the machine is damaged after you have signed for delivery, please immediately call Customer Service at (570) 546-9663 for advice.

Save the containers and all packing materials for possible inspection by the carrier or its agent. Otherwise, filing a freight claim can be difficult.

When you are completely satisfied with the condition of your shipment, you should inventory the contents.



Inventory

After all the parts have been removed from the two boxes, you should have the following items:

Box 1: (Figures 4 & 5)	Qty
A. Metalworking Sander.....	1
B. Spark Trap.....	1
C. Eye Shield.....	1
D. Rest.....	1
Hardware Bag (not shown).....	1
— Hex Bolt M12-1.75 X 30 (Base).....	1
— Hex Nut M12-1.75 (Base).....	1
— Flat Washers (Base).....	2
— Sleeve.....	1
— Cap Screw M5-.8 x 50 (Eye Shield).....	1
— Angle Adjustment Lever.....	1
— Rest Lever.....	1
— Square Nut.....	1

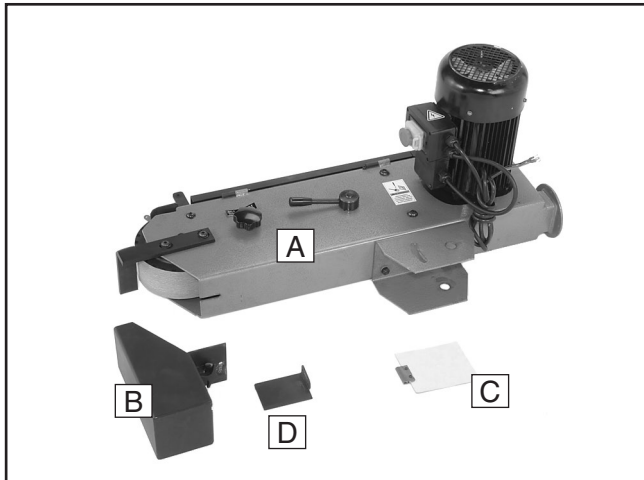


Figure 4. Model G0489 Inventory.

E. Base 1

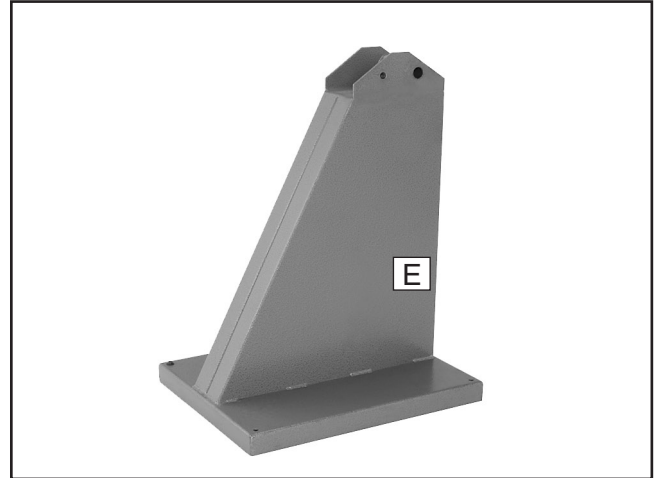


Figure 5. Model G0489 Base.

In the event that any nonproprietary parts are missing (e.g. a nut or a washer), we would be glad to replace them, or for the sake of expediency, replacements can be obtained at your local hardware store.


NOTICE

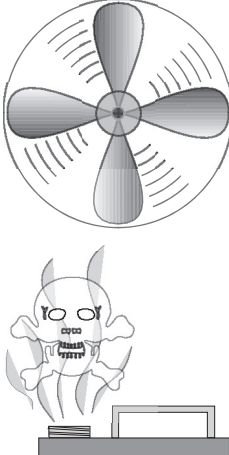
Some hardware/fasteners on the inventory list may arrive pre-installed on the machine. Check these locations before assuming that any items from the inventory list are missing.



Clean Up

The unpainted surfaces are coated with a waxy oil to protect them from corrosion during shipment. Remove this protective coating with a solvent cleaner or citrus-based degreaser such as Grizzly's G7895 Degreaser. To clean thoroughly, some parts may need to be removed. **For optimum performance from your machine, make sure you clean all moving parts or sliding contact surfaces that are coated.** Avoid chlorine-based solvents, such as acetone or brake parts cleaner, as they will damage painted surfaces should they come in contact. Always follow the manufacturer's instructions when using any type of cleaning product.

	<p>⚠️ WARNING Gasoline and petroleum products have low flash points and could cause an explosion or fire if used to clean machinery. DO NOT use gasoline or petroleum products to clean the machinery.</p>
--	--

	<p>⚠️ CAUTION Many of the solvents commonly used to clean machinery can be toxic when inhaled or ingested. Lack of ventilation while using these solvents could cause serious personal health risks or fire. Take precautions from this hazard by only using cleaning solvents in a well ventilated area.</p>
---	--

Site Considerations

Floor Load

Refer to the **Machine Data Sheet** for the weight and footprint specifications of your machine. Some floors may require additional reinforcement to support both the machine and operator.

Working Clearances

Consider existing and anticipated needs, size of material to be processed through each machine, and space for auxiliary stands, work tables or other machinery when establishing a location for your new machine. See **Figure 6** for the minimum working clearances.

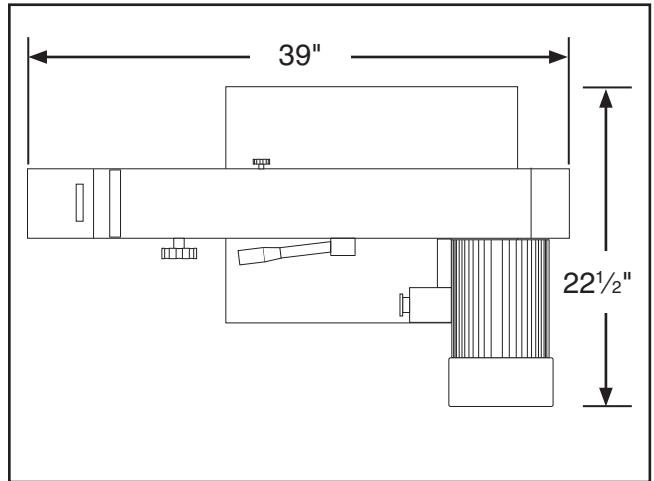


Figure 6. Minimum working clearances.

	<p>⚠️ CAUTION Unsupervised children and visitors inside your shop could cause serious personal injury to themselves. Lock all entrances to the shop when you are away and DO NOT allow unsupervised children or visitors in your shop at any time!</p>
--	--



Mounting to Shop Floor

Although not required, we recommend that you mount your new machine to the floor. Because this is an optional step and floor materials may vary, floor mounting hardware is not included. Generally, you can either bolt your machine to the floor or mount it on machine mounts. Both options are described below. Whichever option you choose, it is necessary to level your machine with a precision level.

Bolting to Concrete Floors

Lag shield anchors with lag bolts (**Figure 7**) and anchor studs (**Figure 8**) are two popular methods for anchoring an object to a concrete floor. We suggest you research the many options and methods for mounting your machine and choose the best that fits your specific application.

NOTICE

Anchor studs are stronger and more permanent alternatives to lag shield anchors; however, they will stick out of the floor, which may cause a tripping hazard if you decide to move your machine.

Using Machine Mounts

Using machine mounts, shown in **Figure 9**, gives the advantage of fast leveling and vibration reduction. The large size of the foot pads distributes the weight of the machine to reduce strain on the floor. Machine mounts for this machine use Grizzly Model G7158.

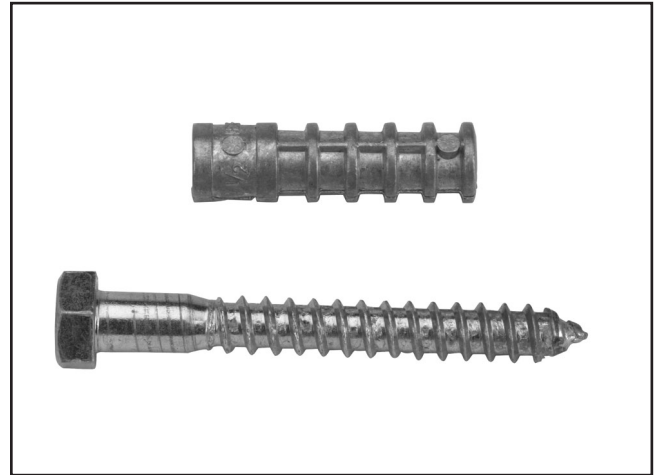


Figure 7. Typical lag shield anchor and lag bolt.

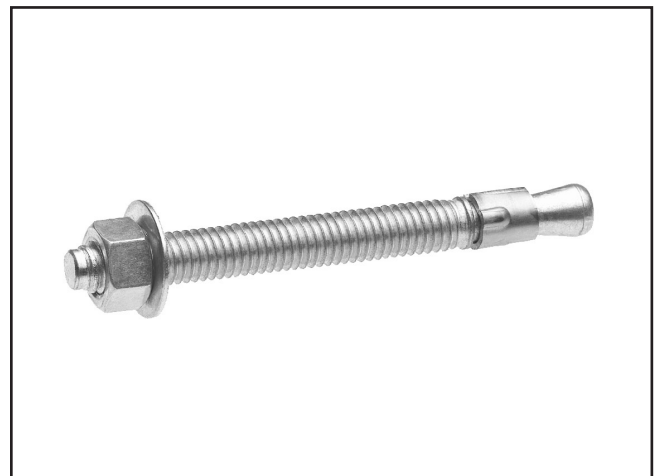


Figure 8. Typical anchor stud.



Figure 9. Machine mount example.



Mounting Sander

This step may require three people to complete—two to lift and hold the sander in place, and one person to install the hardware.

Components and Hardware Needed:	Qty
Sleeve.....	1
Hex Bolt M12-1.75 X 30	1
Hex Nut M12-1.75	1
Flat Washers 12mm	2
Helpers	2
Angle Adjustment Lever	1

To mount the sander to the base:

1. Set the base in the upright position.
2. Slide the sleeve through the holes so it spans the width of the base yoke.
3. With the aid of a couple helpers, lift the sander, spread the yoke on the sander slightly and set onto the base (see **Figure 10**).
4. Slide the 30mm bolt and washers through the sleeve and tighten the nut.
5. Thread the angle adjustment lever through the slot and tighten the sander in position.

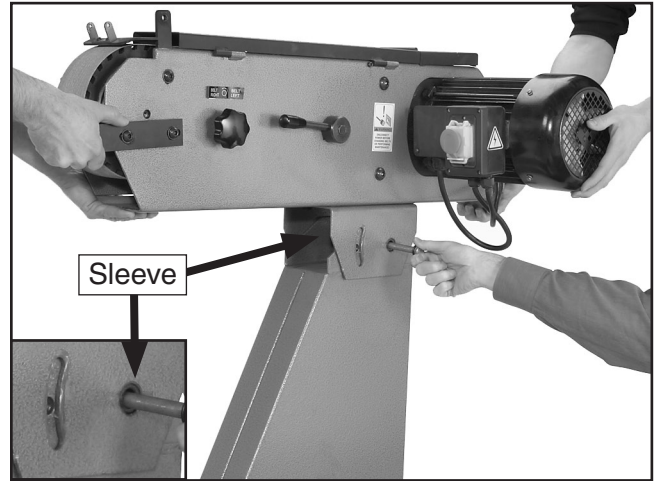


Figure 10. Base installation.

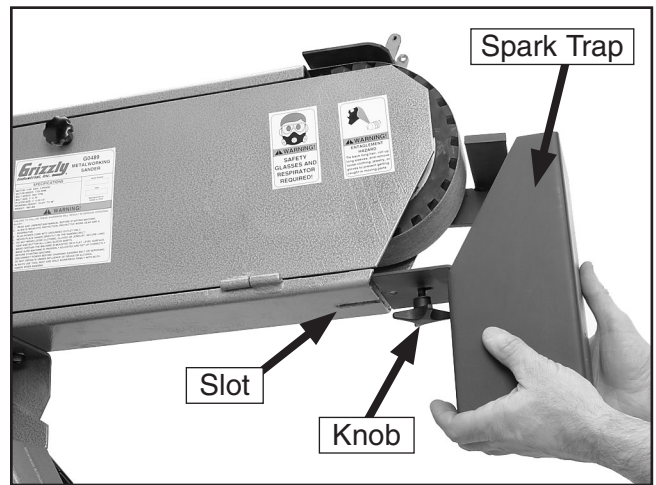


Figure 11. Spark trap installation.

Spark Trap, Rest & Eye Shield

These components **MUST** be mounted before operation.

Components and Hardware Needed:	Qty
Spark Trap.....	1
Eye Shield	1
Rest	1
Rest Lever	1
Square Nut	1
Cap Screw M5-.8 x 50.....	1

To mount the spark trap, rest, & eye shield:

1. Refer to **Figures 11-13**.

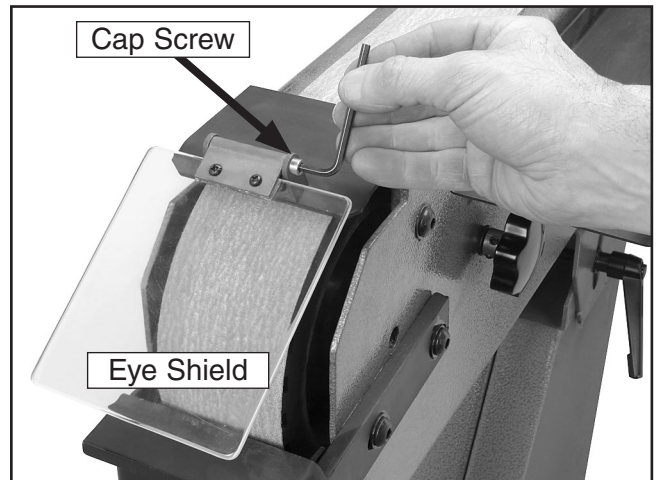


Figure 12. Eye shield installation.



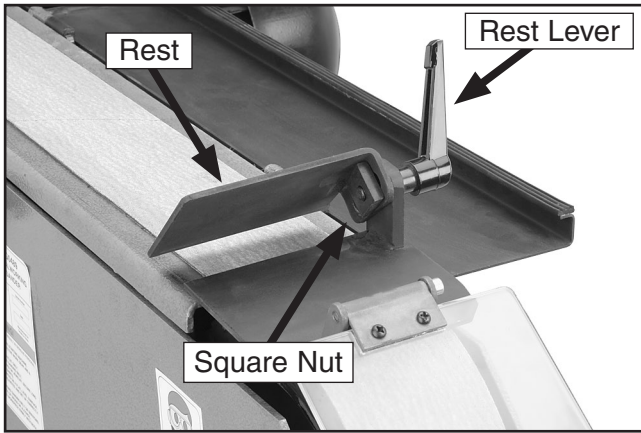


Figure 13. Rest installation.

Dust Collection

! CAUTION

DO NOT operate the Model G0489 with a dust collection system that has been previously used for wood dust collection or other combustible material. Hot metal sparks and fragments could cause material to ignite! **DO NOT** attach to plastic fittings or dust collection system not rated specifically for metal dust collection!

The Model G0489 comes with a 4" dust port ready to attach to your metal dust collection system. Your dust collection system is unique so we cannot give you specific instructions to cover all the possible set up options.

To connect a dust collection hose:

1. Fit your dust hose over the dust port and secure in place with a hose clamp.

Test Run

Once the assembly is complete, test run your machine to make sure it runs properly.

If, during the test run, you cannot easily locate the source of an unusual noise or vibration, stop using the machine immediately.

If you cannot remedy a problem, contact our Tech Support at (570) 546-9663 for assistance.

To test run the machine:

1. Connect the machine to the power source.
2. Make sure you have read the safety instructions at the beginning of the manual and that the machine is setup properly.
3. Make sure all tools and objects used during set up are cleared away from the machine.
4. Turn the machine **ON**.
5. Listen to and watch for abnormal noises or actions. The machine should run smoothly with little or no vibration or rubbing noises.

—Strange or unusual noises should be investigated and corrected before operating the machine further. Always disconnect the machine from power when investigating or correcting potential problems.

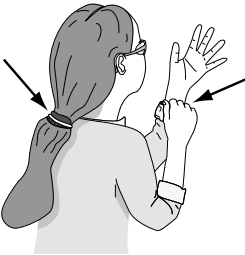
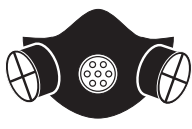


SECTION 4: OPERATIONS

Operation Safety

!WARNING

Damage to your eyes, lungs, and ears could result from using this machine without proper protective gear. Always wear safety glasses, a respirator, and hearing protection when operating this machine.



!WARNING

Loose hair and clothing could get caught in machinery and cause serious personal injury. Keep loose clothing and long hair away from moving machinery.

NOTICE

If you have never used this type of machine or equipment before, WE STRONGLY RECOMMEND that you read books, trade magazines, or get formal training before beginning any projects. Regardless of the content in this section, Grizzly Industrial will not be held liable for accidents caused by lack of training.

Angle Adjustment

The sander can be angled up and down to meet your needs. Use the angle adjustment lever shown in **Figure 14** to lock the sander in the angle you choose. Tighten securely so the sander will not move during operation.

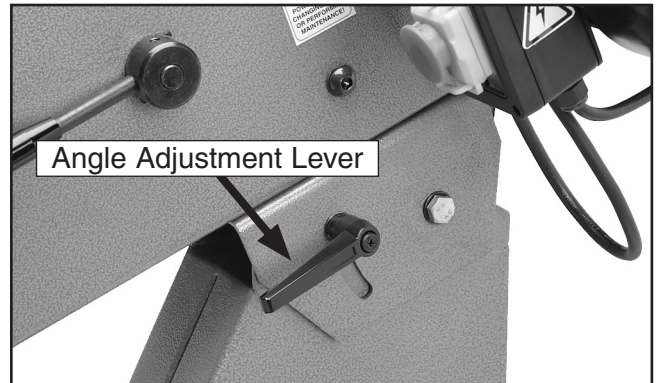


Figure 14. Angle adjustment lever.

Rests

The Model G0489 comes with two rests. A fixed rest sits just above the spark trap. The second sits above the platen and can be adjusted for use or to move it out of the way when closing the belt guard (see **Figure 15**).

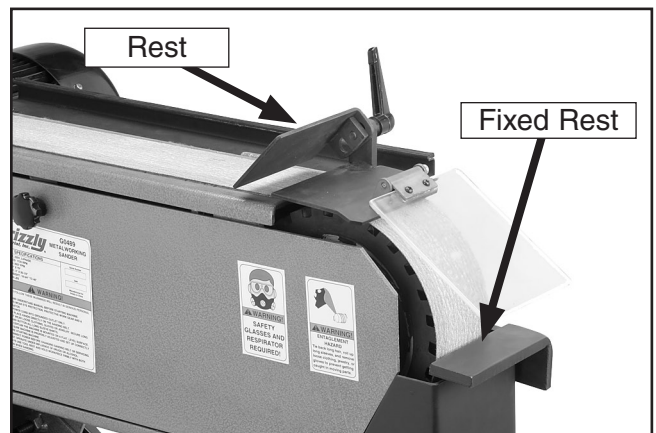


Figure 15. Rest locations.



Grinding Tips

- When grinding against the contact wheel, make sure the belt guard is closed.
- Hold work piece securely with both hands. Use the rests when possible to support the workpiece.
- The workpiece will get hot as you continue to grind. Cool the workpiece frequently by quenching in water or another approved solution.
- Change belts frequently for the best performance.
- Do not force the work into the sander.
- Make sure the shorter, hinged section of the belt guard is folded all the way back to the longer belt guard section. This will allow the belt guard to clear the motor and open completely (see **Figure 16**).

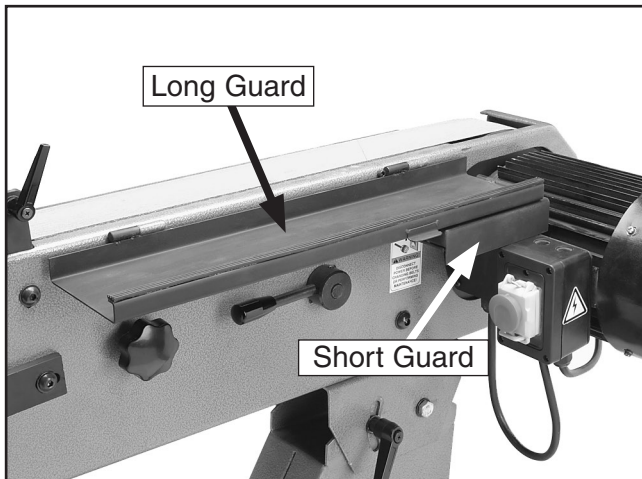


Figure 16. Short guard section folded out of the way.

- Wear the proper protective clothing. Particles flying off of a sander will be traveling very fast—prepare for this. Wear safety glasses, face shield, a dust mask, earplugs, a leather apron, and heavy leather boots.
- Remember that grinding often produces sparks. **DO NOT** allow anyone to stand in the path of the sparks. **DO NOT** grind near flammable materials.
- Concentrate on the task at hand. **STOP** grinding if you are distracted.
- Make sure side cover is closed and latched during operation.

Belt Tracking

When first starting the Model G0489, the belt may not track centrally on the contact wheel.

To adjust the belt tracking:

1. Turn the sander **ON**.
2. Making small adjustments, turn the belt tracking adjustment knob clockwise to move the belt to the left, or turn the knob counter-clockwise to move the belt to the right (see **Figure 17**).
3. Make sure the belt is not making contact with edge of the sander and that it is centered on the contact wheel.

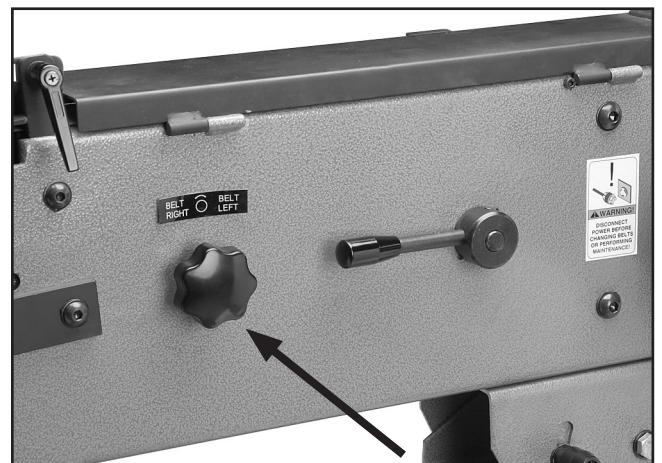


Figure 17. Belt tracking adjustment knob.



SECTION 5: MAINTENANCE



Schedule

For optimum performance from your machine, follow this maintenance and cleaning schedule and refer to any specific instructions given in this section.

Daily Check:

- Loose mounting bolts.
- Worn or damaged belt.
- Clean and chips and debris between platen and sanding belt.
- Empty spark trap.
- Sweep surrounding dust and chips.
- Sweep or vacuum dust and chips from the inside belt compartment and around motor.

Accessories

10-Pack 3" x 79 Aluminum Oxide Belts

- H8865—60 Grit
- H8866—80 Grit
- H8867—100 Grit
- H8868—120 Grit
- H8869—150 Grit

Call 1-800-523-4777 To Order

Changing the Belt

Changing the belt on the Model G0489 is quick and easy.

To change the belt:

1. DISCONNECT THE SANDER FROM THE POWER SUPPLY!
2. Open the belt guard, remove the spark trap, and open the side cover (see **Figure 18**).
3. Loosen the belt by pushing the belt tension lever all the way down until it holds in place.
4. Slip the belt off of the wheels and replace with a new belt. Note the correct rotational direction of the belt.
5. Tighten the belt by pulling the belt tension lever all the way up.
6. Spin the belt by hand to resume previous belt tracking. Adjust if necessary.
7. Close and latch the side cover, remount the spark trap, and close the belt guard.

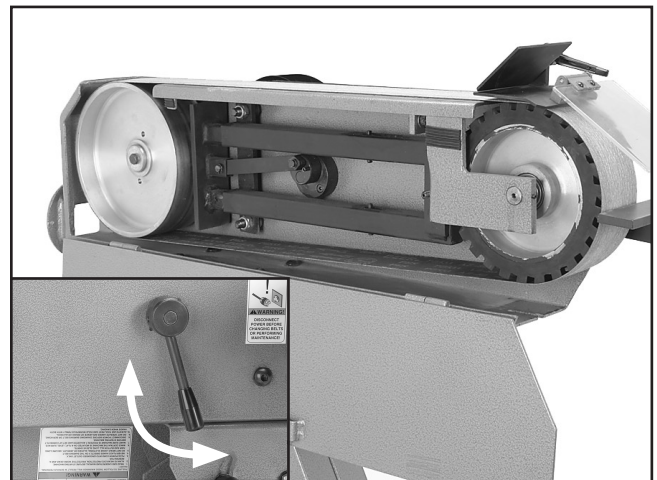
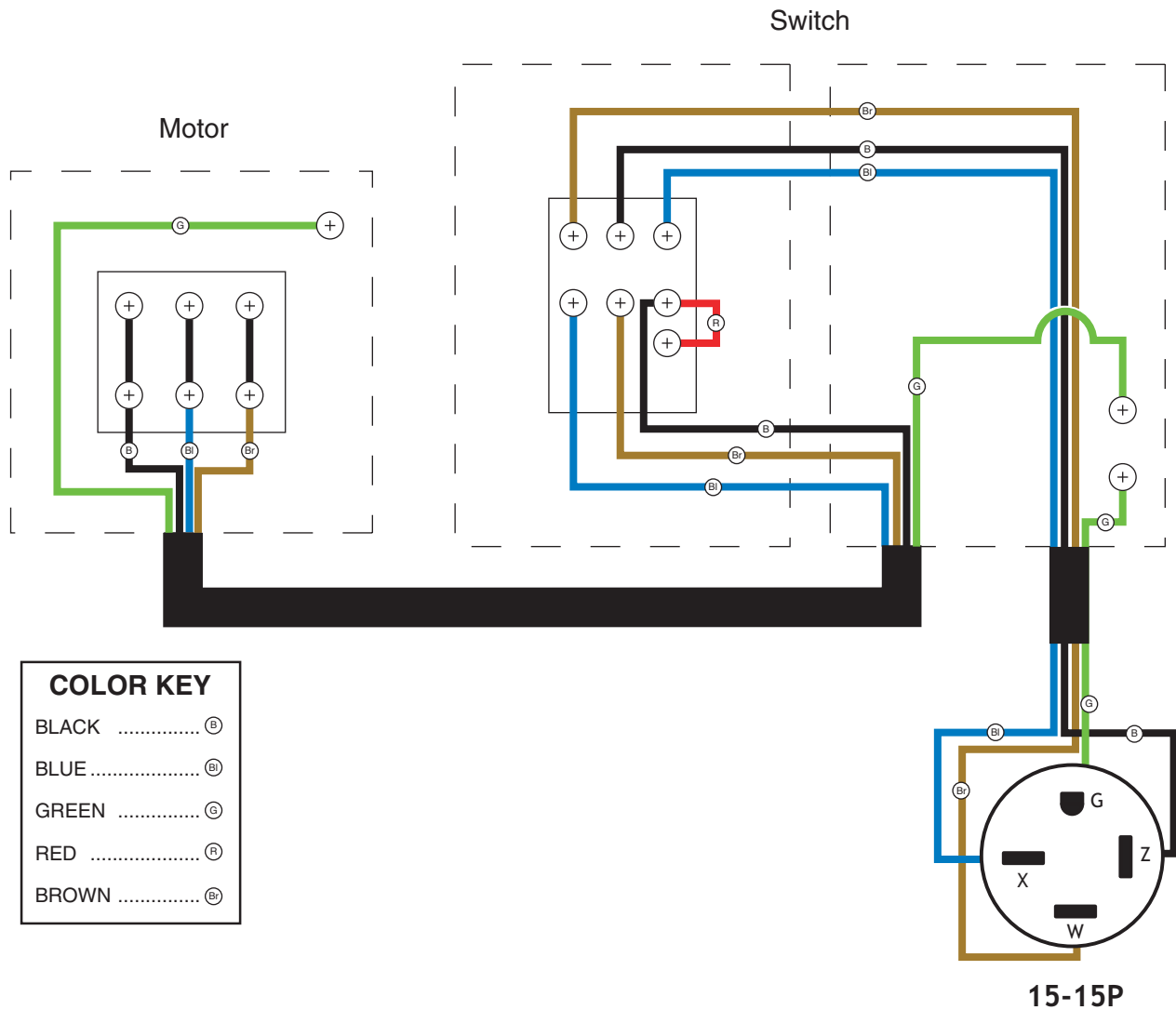
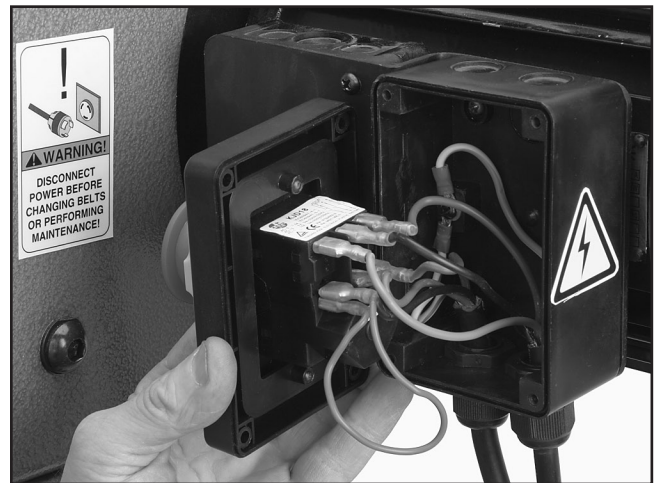
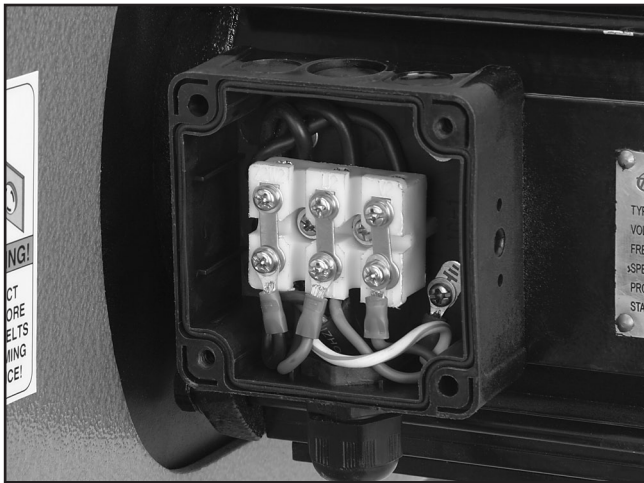


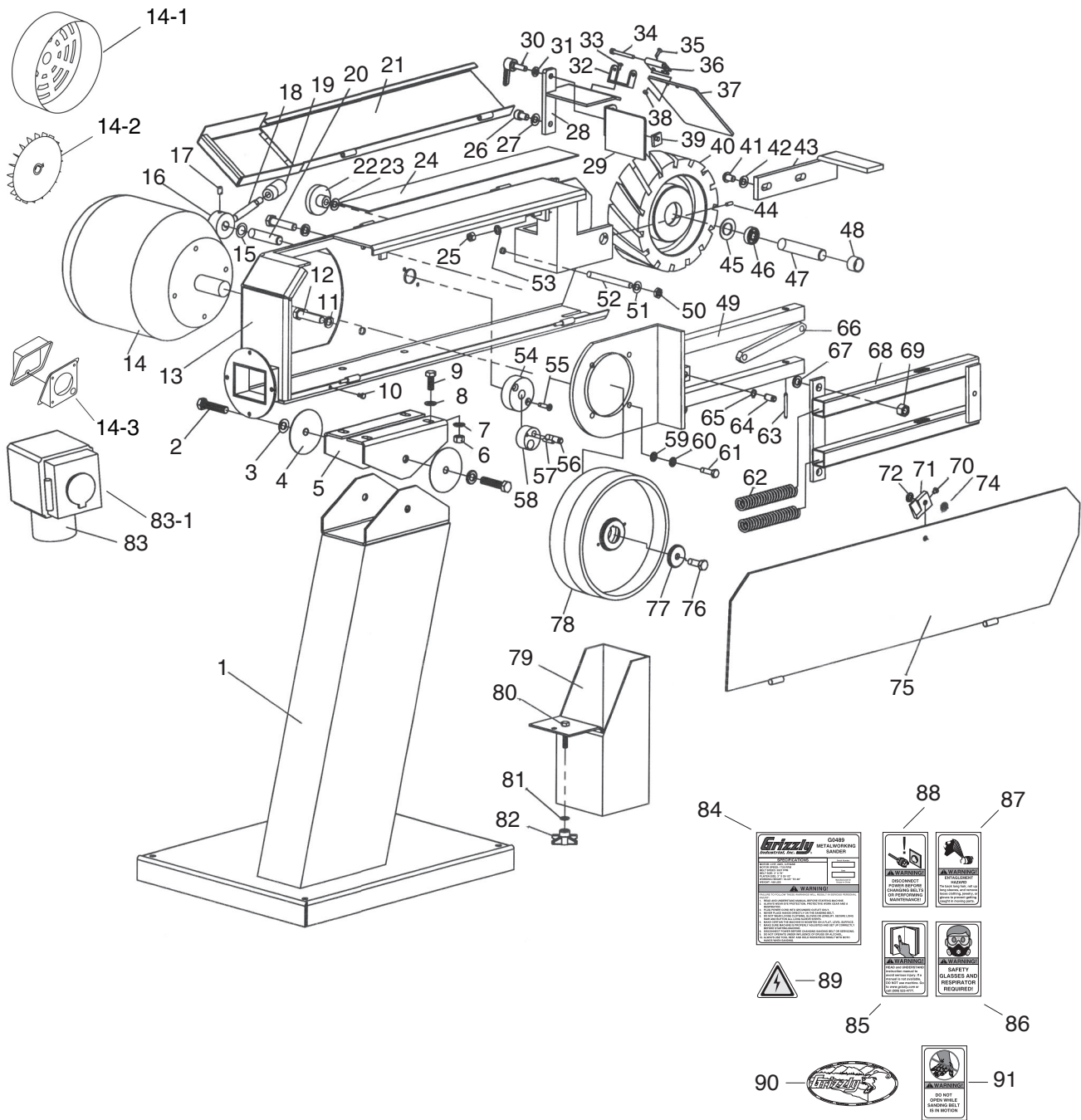
Figure 18. Belt replacement.



Electrical Components & Wiring Diagram



G0489 Parts Breakdown



⚠️ WARNING

Safety labels warn about machine hazards and ways to prevent injury. The owner of this machine **MUST** maintain the original location and readability of the labels on the machine. If any label is removed or becomes unreadable, **REPLACE** that label before using the machine again. Contact Grizzly at (800) 523-4777 or www.grizzly.com to order new labels.



G0489 Parts List

REF	PART #	DESCRIPTION
1	P0489001	STAND
2	PB157M	HEX BOLT M12-1.75 X 130
3	PW06M	FLAT WASHER 12MM
4	P0489004	PAPER SPACER
5	P0489005	PIVOT BASE
6	PN02M	HEX NUT M10-1.5
7	PW04M	FLAT WASHER 10MM
8	PW04M	FLAT WASHER 10MM
9	PB74M	HEX BOLT M10-1.5 X 20
10	PB96M	HEX BOLT M5-.8 X 10
11	PW06M	FLAT WASHER 12MM
12	PB33M	HEX BOLT M12-1.75 X 50
13	P0489013	BODY
14	P0489014	MOTOR
14-1	P0489014-1	FAN COVER
14-2	P0489014-2	FAN
14-3	P0489014-3	JUNCTION BOX
15	P0489015	SPACER
16	P0489016	LEVER HUB
17	PSS09M	SET SCREW M8-1.25 X 20
18	P0489018	LEVER
19	P0489019	LEVER HANDLE
20	P0489020	SHAFT
21	P0489021	BELT GUARD
22	P0489022	TRACKING KNOB
23	PW04M	FLAT WASHER 10MM
24	P0489024	GRAPHITE LAYER
25	P0489025	HEX NUT M8-1.25
26	PB40M	HEX BOLT M10-1.5 X 15
27	PW04M	FLAT WASHER 10MM
28	P0489028	SUPPORT
29	P0489029	SUPPORT PLATE
30	P0489030	LOCK HANDLE
31	PW01M	FLAT WASHER 8MM
32	P0489032	EYE SHIELD BASE
33	PS05M	PHLP HD SCR M5-.8 X 8
34	PSB109M	CAP SCREW M5-.8 X 50
35	PS02M	PHLP HD SCR M4-.7 X 12
36	P0489036	BRACKET
37	P0489037	EYE SHIELD
38	PN04M	HEX NUT M4-.7
39	P0489039	SQUARE NUT M8-1.25
40	P0489040	CONTACT WHEEL
41	PB40M	HEX BOLT M10-1.5 X 15
42	PW04M	FLAT WASHER 10MM
43	P0489043	WORK SUPPORT
44	PSS34M	SET SCREW M5-.8 X 16

REF	PART #	DESCRIPTION
45	P0489045	STOP RING
46	P6004	BEARING 6004
47	P0489047	SHAFT
48	P0489048	SPACER
49	P0489049	MOTOR SUPPORT
50	PN02M	HEX NUT M10-1.5
51	P0489051	THRUST WASHER
52	P0489052	THREADED ROD M10-1.5 X 80MM
53	PW01M	FLAT WASHER 8MM
54	P0489054	BASE
55	PSB06M	CAP SCREW M6-1 X 25
56	P0489056	PIVOT PIN
57	PRP07M	ROLL PIN 6 X 20
58	P0489058	ECCENTRIC WHEEL
59	PW01M	FLAT WASHER 8MM
60	PLW04M	LOCK WASHER 8MM
61	PB19M	HEX BOLT M8-1.25 X 24
62	P0489062	EXTENSION SPRING
63	P0489063	SOLID PIN
64	P0489064	PIVOT PIN
65	PR01M	EXT RETAINING RING 10MM
66	P0489066	DRAW BAR
67	P0489067	THRUST WASHER
68	P0489068	BELT TENSIONER
69	PN09M	HEX NUT M12-1.75
70	PSS08M	SET SCREW M4-.7 X 5
71	P0489071	DOOR LATCH
72	P0489072	KNOB M8-1.25 X 15
74	PW01M	FLAT WASHER 8MM
75	P0489075	SIDE COVER
76	PB01M	HEX BOLT M10-1.5 X 30
77	P0489077	SPECIAL WASHER 10MM
78	P0489078	DRIVE WHEEL
79	P0489079	SPARK TRAP
80	PB87M	HEX BOLT M8-1.25 X 15
81	PW01M	FLAT WASHER 8MM
82	P0489082	KNOB M8-1.25
83	P0489083	OVERLOAD SWITCH
83-1	P0489083-1	ON/OFF SWITCH
84	P0489084	MACHINE ID LABEL
85	PLABEL-12	READ MANUAL LABEL
86	PLABEL-37	RESPIRATOR/GLASSES LABEL
87	PLABEL-41	ENTANGLEMENT LABEL
88	PLABEL-36	UNPLUG 220V LABEL
89	PLABEL-14	ELECTRICITY LABEL
90	G8588	LOGO PLATE
91	PLABEL-30	DOOR CLOSED LABEL



WARRANTY AND RETURNS

Grizzly Industrial, Inc. warrants every product it sells for a period of **1 year** to the original purchaser from the date of purchase. This warranty does not apply to defects due directly or indirectly to misuse, abuse, negligence, accidents, repairs or alterations or lack of maintenance. This is Grizzly's sole written warranty and any and all warranties that may be implied by law, including any merchantability or fitness, for any particular purpose, are hereby limited to the duration of this written warranty. We do not warrant or represent that the merchandise complies with the provisions of any law or acts unless the manufacturer so warrants. In no event shall Grizzly's liability under this warranty exceed the purchase price paid for the product and any legal actions brought against Grizzly shall be tried in the State of Washington, County of Whatcom.

We shall in no event be liable for death, injuries to persons or property or for incidental, contingent, special, or consequential damages arising from the use of our products.

To take advantage of this warranty, contact us by mail or phone and give us all the details. We will then issue you a "Return Number," which must be clearly posted on the outside as well as the inside of the carton. We will not accept any item back without this number. Proof of purchase must accompany the merchandise.

The manufacturers reserve the right to change specifications at any time because they constantly strive to achieve better quality equipment. We make every effort to ensure that our products meet high quality and durability standards and we hope you never need to use this warranty.

Please feel free to write or call us if you have any questions about the machine or the manual.

Thank you again for your business and continued support. We hope to serve you again soon.





WARRANTY CARD

Name _____
 Street _____
 City _____ State _____ Zip _____
 Phone # _____ Email _____ Invoice # _____
 Model # _____ Order # _____ Serial # _____

The following information is given on a voluntary basis. It will be used for marketing purposes to help us develop better products and services. **Of course, all information is strictly confidential.**

1. How did you learn about us?

Advertisement Friend Catalog
 Card Deck Website Other:

2. Which of the following magazines do you subscribe to?

<input type="checkbox"/> Cabinet Maker	<input type="checkbox"/> Popular Mechanics	<input type="checkbox"/> Today's Homeowner
<input type="checkbox"/> Family Handyman	<input type="checkbox"/> Popular Science	<input type="checkbox"/> Wood
<input type="checkbox"/> Hand Loader	<input type="checkbox"/> Popular Woodworking	<input type="checkbox"/> Wooden Boat
<input type="checkbox"/> Handy	<input type="checkbox"/> Practical Homeowner	<input type="checkbox"/> Woodshop News
<input type="checkbox"/> Home Shop Machinist	<input type="checkbox"/> Precision Shooter	<input type="checkbox"/> Woodsmith
<input type="checkbox"/> Journal of Light Cont.	<input type="checkbox"/> Projects in Metal	<input type="checkbox"/> Woodwork
<input type="checkbox"/> Live Steam	<input type="checkbox"/> RC Modeler	<input type="checkbox"/> Woodworker West
<input type="checkbox"/> Model Airplane News	<input type="checkbox"/> Rifle	<input type="checkbox"/> Woodworker's Journal
<input type="checkbox"/> Modeltec	<input type="checkbox"/> Shop Notes	<input type="checkbox"/> Other:
<input type="checkbox"/> Old House Journal	<input type="checkbox"/> Shotgun News	

3. What is your annual household income?

\$20,000-\$29,000 \$30,000-\$39,000 \$40,000-\$49,000
 \$50,000-\$59,000 \$60,000-\$69,000 \$70,000+

4. What is your age group?

20-29 30-39 40-49
 50-59 60-69 70+

5. How long have you been a woodworker/metalworker?

0-2 Years 2-8 Years 8-20 Years 20+ Years

6. How many of your machines or tools are Grizzly?

0-2 3-5 6-9 10+

7. Do you think your machine represents a good value?

Yes No

8. Would you recommend Grizzly Industrial to a friend?

Yes No

9. Would you allow us to use your name as a reference for Grizzly customers in your area?

Note: We never use names more than 3 times.

Yes No

10. Comments: _____

CUT ALONG DOTTED LINE

FOLD ALONG DOTTED LINE



Place Stamp Here



GRIZZLY INDUSTRIAL, INC.
P.O. BOX 2069
BELLINGHAM, WA 98227-2069



FOLD ALONG DOTTED LINE

Send a Grizzly Catalog to a friend:

Name _____
Street _____
City _____ State _____ Zip _____

TAPE ALONG EDGES--PLEASE DO NOT STAPLE

grizzly.com

TOOL WEBSITE

Buy Direct and Save with Grizzly® – Trusted, Proven and a Great Value!

*Visit Our Website Today And Discover
Why Grizzly® Is The Industry Leader!*

- SECURE ORDERING
- ORDERS SHIPPED WITHIN 24 HOURS
- E-MAIL RESPONSE WITHIN ONE HOUR

-OR-

Call Today For A **FREE**
Full Color Catalog

1-800-523-4777

